

Bentone B30

Oil burner 4,5-17,0 kg/h (53,4-201,6 kW)

All over the world our burners are well known for its reliability, efficiency and high performance. Bentone burners are installed in most heating and industrial applications worldwide.

Bentone The 1-stage burner has 1 nozzle for On/Off control and the 2-stage burner has 1 nozzle and working pressure on the oil which is controlled by a solenoid valve in the oil pump. Hydraulic adjustment of the nozzle assembly is optional on the 2-stage models. All burners are supplied with 2 flexible oil hoses, fixing flange, gasket and operating instructions.

Approved burner for industrial applications!

Bentone's standard oil burner is approved according to standard EN 267 along with traditional hot water boilers with temperatures up to 110 °C. In addition they can be delivered approved according to the J / K Directive (Applicable in the EU and countries that comply with the same standard).

Annex J - Harmonization of the Machinery Directive:

Requirements for installation of burners in industrial applications.

EN 746-2 - Industrial process burners:

Requirements for the installation of burners on boilers for processing, refining, manufacturing and other industrial processes.

Annex K - Harmonization of the pressure vessel directive

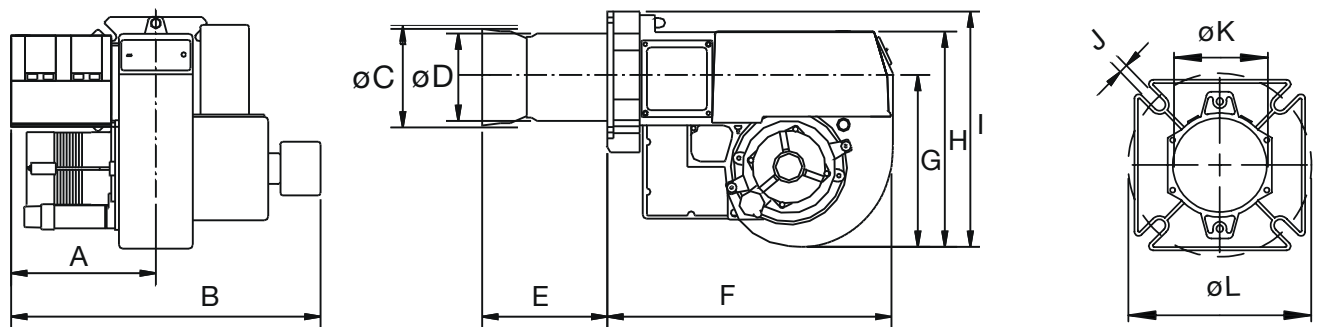
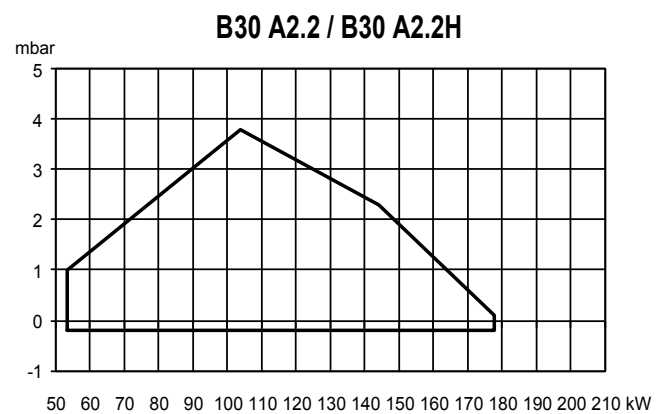
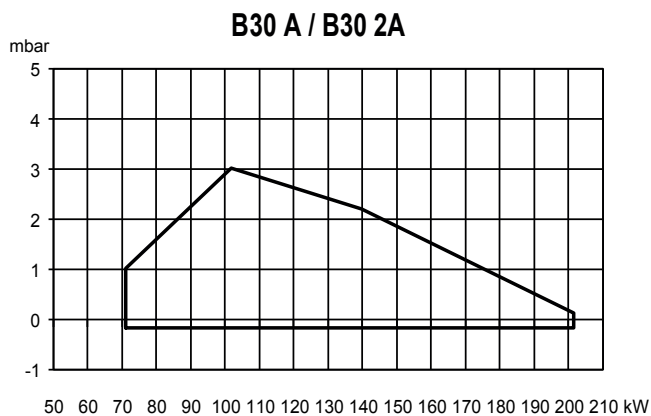
Requirements for the installation of burners on boilers, hot water boilers and hot oil boilers with a temperature above 110 ° C.

Benefits

- Energy saving and compatible with environmental requirements
- Quiet in operation and designed for easy maintenance
- Reliable and trouble free
- Designed and approved in accordance with the European standard EN 267
- Suitable for High Resistance Boilers
- Suitable for High Resistance Boilers
- Industry standard components easily available
- Available with hydraulic air adjustment or airdamper motor
- Plug-in contact facilitates the installation
- Low fuel consumption
- Available according to Annex J & K



Type		B30 A	B30 2A	B30 A2.2	B30 A2.2H
Oil capacity	kg/h	6.0-17.0	6.0-17.0	4.5-15.0	4.5-15.0
Approved capacity (according to EN267 and DIN4787 T2)	kW	71-202	71-202	53-178	53-178
	Mcal/h	61-173	61-173	46-153	46-153
Recommended pump pressure	bar	10-15	① 8-12 / ② 18-25	18-25	14
Max chimney pressure	mbar	3.0		3.8	
Motor (60 Hz available on request)	W/V/Hz	180 / 230 / 50			
1-stage (one pump pressure/ one nozzle)		●			
2-stage (two pump pressures/ one nozzle)			●		
Air damper motor			●	●	
Hydraulic air regulation					●
Hydraulic adjustment of nozzle assembly					●
Approved according to the J / K Directive (IP40)		★	★	★	★



	A	B	øC	øD	E ●	E ★	E ★	F	G	H	I	J	øK	L
B30	175	382	108	108	187	115	315	372	220	281	303	M10	108	160-190
B30-2	188	395	108	108	174	102	315	372	220	281	303	M10	108	160-190
B30-2H	188	415	108	108	174	102	315	372	220	281	303	M10	108	160-190

● Standard ★ Assesory/Opcion offered on request



DISTRIBUTEUR EN TUNISIE

Rue de la Fonte, zone industrielle 2013 BEN AROUS
Téléphone : 71 38 85 34 - Fax : 71 38 42 30
E-mail : atv@atv.tn
Site web : www.atv.tn

