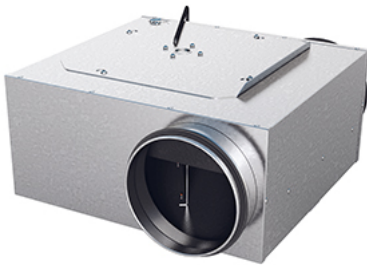


## LPKB 160 C1



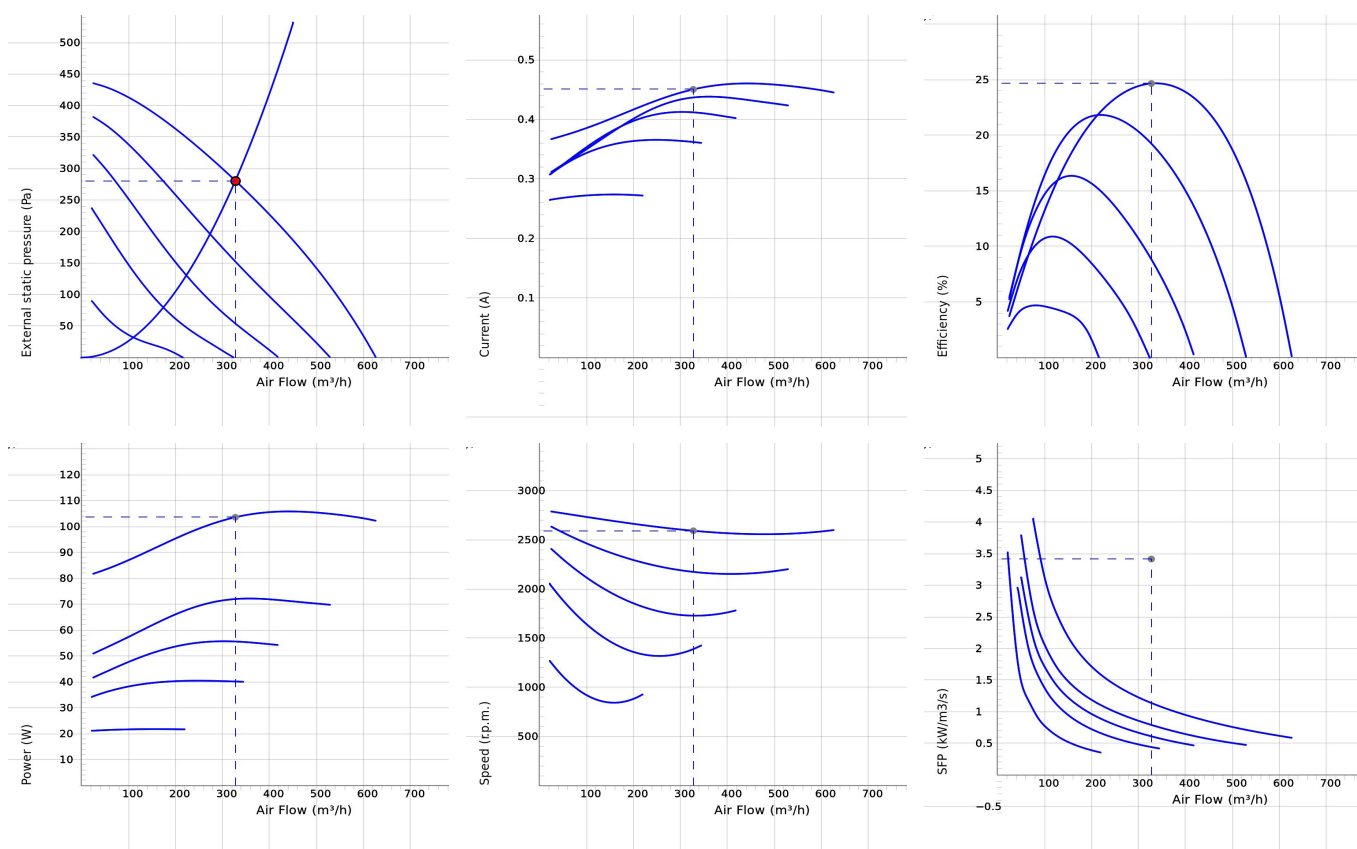
- Low profile duct fan with circular connections.
- A small and useful duct fan which are perfect for spaces with minimum height clearance.
- With one connection on the inlet side.
- High capacity and efficiency with low sound levels.
- Operational in both 50 and 60 Hz.
- Impeller with backward curved blades.
- The external rotor motor has maintenance-free sealed ball-bearings.
- Integrated motor protection.
- Junction box has enclosure class IP 54.
- For speed control a transformer or electronic speed controller can be connected.
- Fan housing is manufactured from galvanized sheet steel.
- Duct connections are equipped with rubber seals.
- The fan is intended to be installed in a duct system.
- A duct connected fan can be installed outside or in damp environments.
- The mounting brackets simplify installation in any position.
- To comply with the ErP 2018 regulation, a local demand controller must be used.



DISTRIBUTEUR EN TUNISIE

Rue de la Fonte, zone industrielle 2013 BEN AROUS  
Téléphone : 71 38 85 34 – Fax : 71 38 42 30  
E-mail : atv@atv.tn  
Site web : www.atv.tn

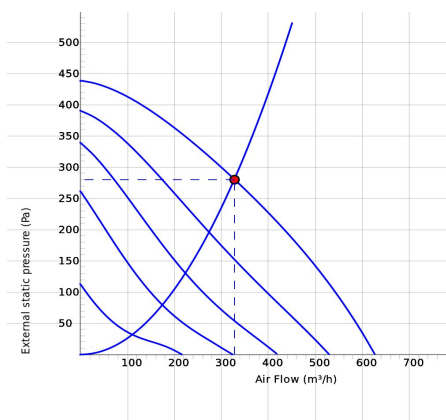
## DIAGRAMS



## Work Point

Air Flow (m³/h)	External static pressure (Pa)	Power (W)	Speed (r.p.m.)	Current (A)	Efficiency (%)	SFP (kW/m³/s)	Voltage (V)
328	281	104	2592	0.45	24.7	1.14	230

## SOUND DATA



	Tot	63	125	250	500	1k	2k	4k	8k
Inlet Lw dB(A)	74	53	62	70	70	63	55	56	45
Outlet Lw dB(A)	75	58	62	69	73	65	62	62	49
Surrounding Lw dB(A)	58	33	44	53	54	47	44	40	33
Surrounding Lp dB (A) 3m	51								

## Work Point

Air Flow (m³/h) 328	External static pressure (Pa) 281	Power (W) 104	Speed (r.p.m.) 2592	Current (A) 0.45	Efficiency (%) 24.7	SFP (kW/m³/s) 1.14	Voltage (V) 230
------------------------	--------------------------------------	------------------	------------------------	---------------------	------------------------	-----------------------	--------------------

## TECHNICAL DATA

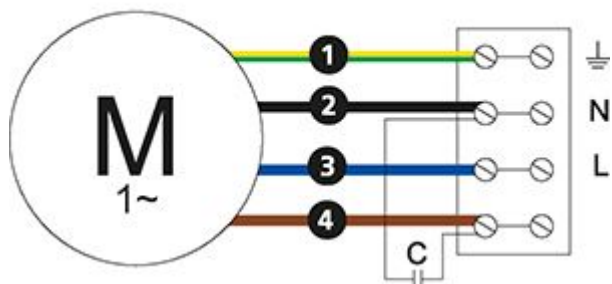
Parameter	LPKB 160 C1 aut tp 7540253		LPKB 160 C1 man tp 7540257	
	Value	Unit	Value	Unit
Voltage	230	V	230	V
Phase	1	~	1	~
Frequency	50	Hz	50	Hz
Power	106	W	106	W
Current	0.46	A	0.46	A
Speed	2560	r.p.m.	2560	r.p.m.
Max. temperature of transported air	75	°C	75	°C
Max. temperature of transported air when speed controlled	75	°C	75	°C
Sound pressure level at 3 m	51	dB(A)	51	dB(A)
Weight	7.0	kg	7.0	kg
Enclosure class	44	IP	44	IP
Insulation class, motor	F		F	
Capacitor	3	µF	3	µF
Duct connection	160	mm	160	mm
Max. flow	626.40175392491	m³/h	626.40175392491	m³/h
Max. pressure	440	Pa	440	Pa
Voltage range	220-240	V	220-240	V

## ECODESIGN

Parameter	Value	Unit
(a) Manufacturer	Östberg	-
(b) Model code	LPKB 160 C1	-
(c) SEC value	-25.79	kWh/m <sup>2</sup>
SEC class	C	-
(d) Declared type	RVU / UVU	-
(e) Type of drive	Multi-speed drive (accessory)	-
(f) Type of heat recovery	N/A	-
(g) Thermal efficiency	N/A	%
(h) Max. flow rate (@100Pa)	542	m <sup>3</sup> /h
(i) Power at max. flow rate	105	W
(j) Sound power level	58	dB LwA
(k) Reference flow rate	0.129	m <sup>3</sup> /s
(l) Reference pressure difference	50	Pa
(m) SPI	0.15	W/(m <sup>3</sup> /h)
(n) Type of control	Local demand control (accessory)	-
(o) External (and internal) leakage rate	0.74 (N/A)	%
(p) Mixing rate	N/A	-
(q) Visual filter warning	N/A	-
(r) Instruction supply/exhaust grilles	See manual	-
(s) Disassembly instructions	<a href="http://www.ostberg.com">www.ostberg.com</a>	-
(t) Airflow sensitivity	N/A	-
(u) Air tightness	N/A	m/s
(v) AEC	145	kWh
(w) AHS average	3018	kWh
AHS warmer	1365	kWh
AHS colder	5904	kWh

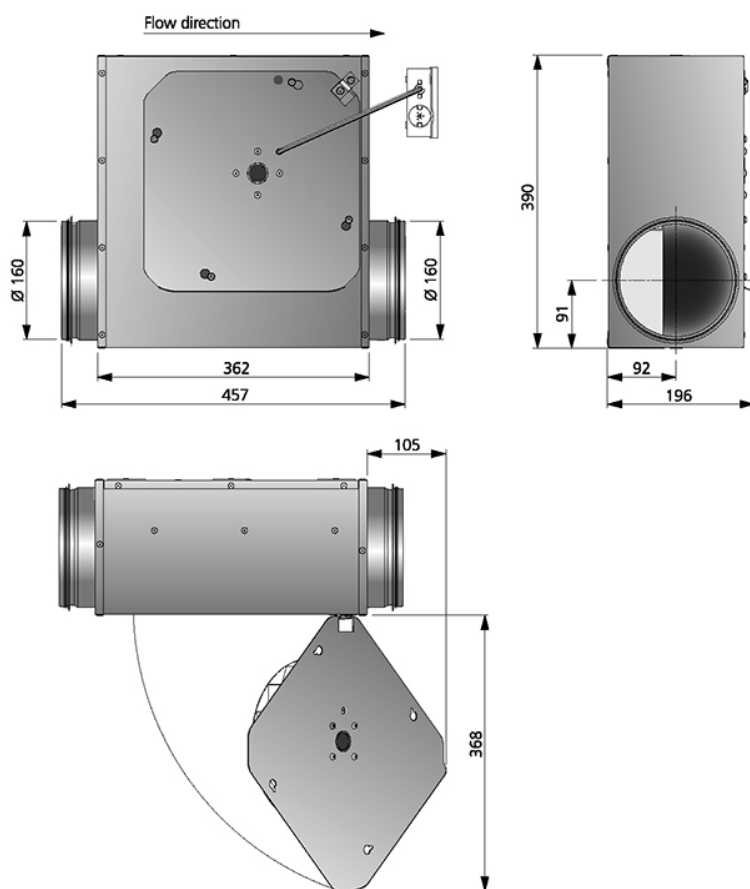
## WIRING DIAGRAM

4040001



- Ⓜ = Fan Motor
- Ⓜ1 = Fan Motor
- Ⓜ2 = Fan Motor
- Ⓜ3 = Rotor Motor
- ① = Yellow/Green
- ② = Black
- ③ = Blue
- ④ = Brown
- ⑤ = White
- ⑥ = Orange
- ⑦ = Grey
- ⑧ = Red
- ⑨ = Green
- ⑩ = Violet
- ⑪ = Quick switch
- ⑫ = Yellow

## DIMENSIONS



## ACCESSORIES

### Mechanical accessories



Mounting clamp MK 160



Safety grille BSV 160



Back draught shutter RSK 160



Louvre YG 160



Louvre shutter VK 160



Filterbox FLK 160



Filterbox FLF 160



Silencer LDC 160

### Electrical accessories



Transformer controller VRTE C



Transformer controller VRDE 1.5



Speed controller VRS 0.5



Local Demand Controller Kit



DISTRIBUTEUR EN TUNISIE

Rue de la Fonte, zone industrielle 2013 BEN AROUS  
Téléphone : 71 38 85 34 – Fax : 71 38 42 30  
E-mail : [atv@atv.tn](mailto:atv@atv.tn)  
Site web : [www.atv.tn](http://www.atv.tn)