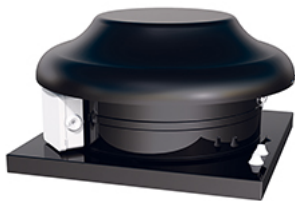


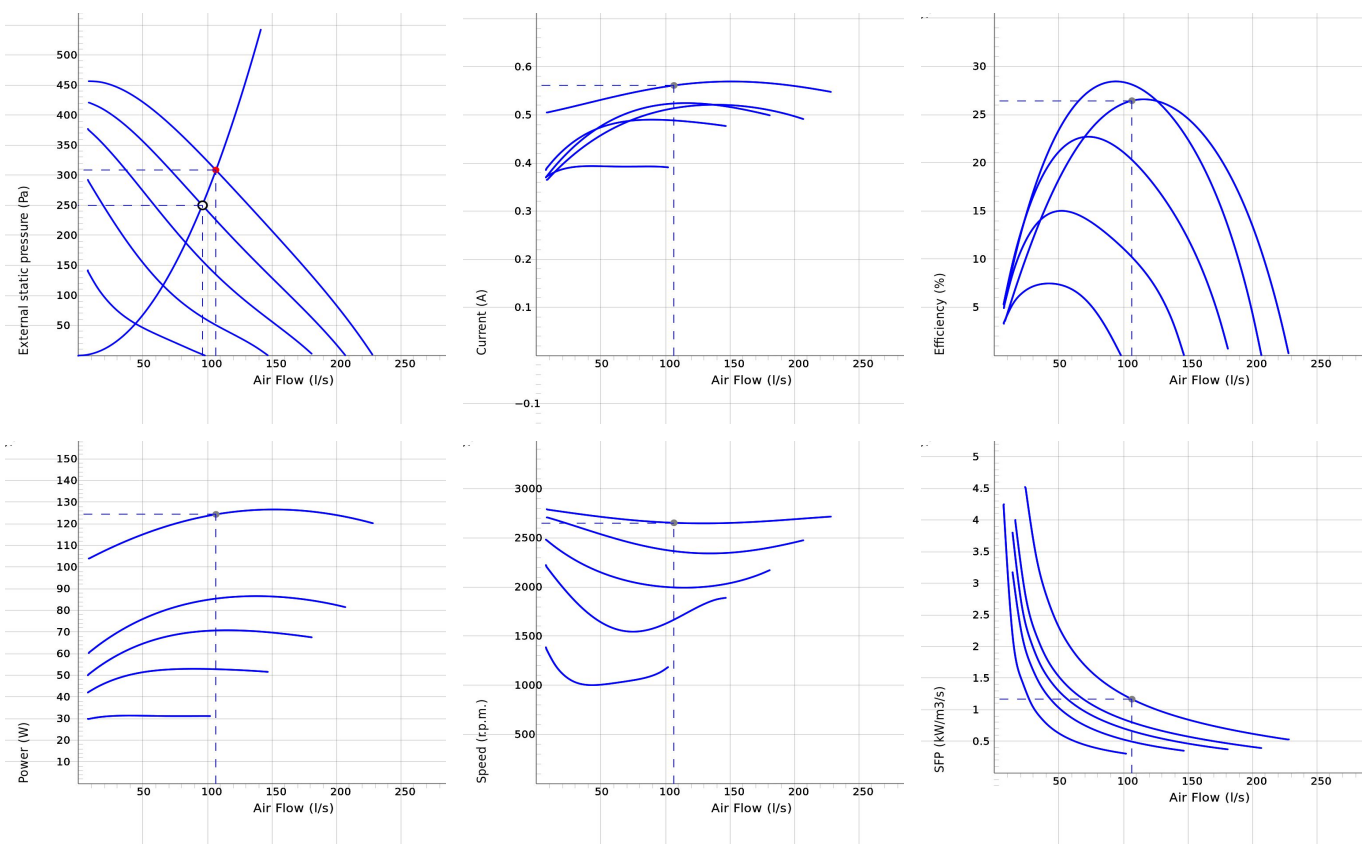
TKS 400 B1



- Roof fan with square connection.
- Horizontal outlet.
- High performance and proven reliability.
- Operational in both 50 and 60 Hz.
- Impeller with backward curved blades.
- The external rotor motor has maintenance-free sealed ball-bearings.
- Integrated motor protection.
- Junction box has enclosure class IP 54.
- For speed control a transformer or electronic speed controller can be connected.
- Fan housing is manufactured from galvanized sheet steel which is polyester plastic coated in black as standard.
- Swing-up design to simplify maintenance and cleaning of the impeller.
- The easiest way to mount the roof fan is with a roof curb, TFU to TKS.
- The fan complies with environmental requirement M2.
- To comply with the ErP 2018 regulation, a local demand controller must be used.



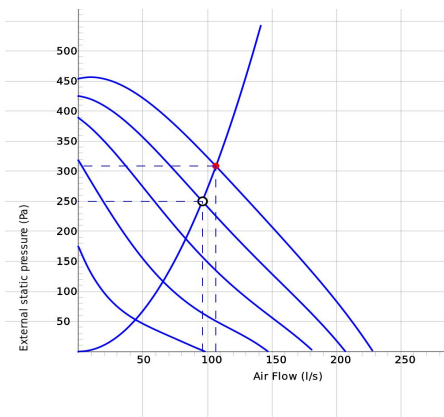
DIAGRAMS



Work Point

Air Flow (l/s)	External static pressure (Pa)	Power (W)	Speed (r.p.m.)	Current (A)	Efficiency (%)	SFP (kW/m ³ /s)	Voltage (V)
107	308	124	2653	0.561	26.4	1.17	230

SOUND DATA



	Tot	63	125	250	500	1k	2k	4k	8k
Inlet Lw dB(A)	74	58	65	68	68	64	65	60	54
Surrounding Lw dB(A)	69	36	50	59	63	65	62	57	48
Surrounding Lp dB (A) 3m	62								

Work Point

Air Flow (l/s) 107	External static pressure (Pa) 308	Power (W) 124	Speed (r.p.m.) 2653	Current (A) 0.561	Efficiency (%) 26.4	SFP (kW/m3/s) 1.17	Voltage (V) 230
-----------------------	--------------------------------------	------------------	------------------------	----------------------	------------------------	-----------------------	--------------------

TECHNICAL DATA

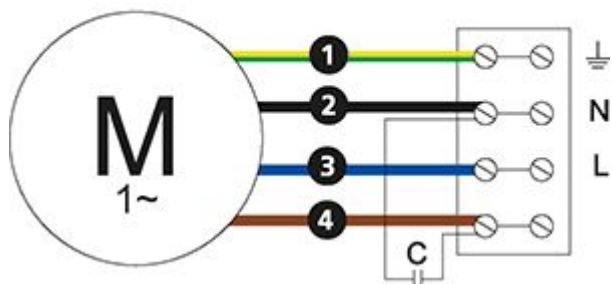
Parameter	TKS 400 B1-v1 Black w cable 7210091		TKS 400 B1-v1 Brick red w cable 7210094	
	Value	Unit	Value	Unit
Voltage	230	V	230	V
Phase	1	~	1	~
Frequency	50	Hz	50	Hz
Optional frequency	60	Hz	60	Hz
Power	127	W	127	W
Current	0.57	A	0.57	A
Speed	2660	r.p.m.	2660	r.p.m.
Max. temperature of transported air	60	°C	60	°C
Max. temperature of transported air when speed controlled	60	°C	60	°C
Sound pressure level at 3 m	62	dB(A)	62	dB(A)
Weight	6.2	kg	6.2	kg
Enclosure class	44	IP	44	IP
Insulation class, motor	F		F	
Capacitor	4	µF	4	µF
Max. flow	228	l/s	228	l/s
Max. pressure	458	Pa	458	Pa
Voltage range	220-240	V	220-240	V

ECODESIGN

Parameter	Value	Unit
(a) Manufacturer	Östberg	-
(b) Model code	TKS 400 B1	-
(c) SEC value	-26.2	kWh/m ²
SEC class	B	-
(d) Declared type	RVU / UVU	-
(e) Type of drive	Multi-speed drive (accessory)	-
(f) Type of heat recovery	N/A	-
(g) Thermal efficiency	N/A	%
(h) Max. flow rate (@100Pa)	698	m ³ /h
(i) Power at max. flow rate	125	W
(j) Sound power level	66	dB LwA
(k) Reference flow rate	0.154	m ³ /s
(l) Reference pressure difference	50	Pa
(m) SPI	0.13	W/(m ³ /h)
(n) Type of control	Local demand control	-
(o) External (and internal) leakage rate	2 (N/A)	%
(p) Mixing rate	N/A	-
(q) Visual filter warning	N/A	-
(r) Instruction supply/exhaust grilles	See manual	-
(s) Disassembly instructions	www.ostberg.com	-
(t) Airflow sensitivity	N/A	-
(u) Air tightness	N/A	m/s
(v) AEC	251	kWh
(w) AHS average	3018	kWh
AHS warmer	1365	kWh
AHS colder	5904	kWh

WIRING DIAGRAM

4040001



Ⓜ = Fan Motor

Ⓜ1 = Fan Motor

Ⓜ2 = Fan Motor

Ⓜ3 = Rotor Motor

① = Yellow/Green

② = Black

③ = Blue

④ = Brown

⑤ = White

⑥ = Orange

⑦ = Grey

⑧ = Red

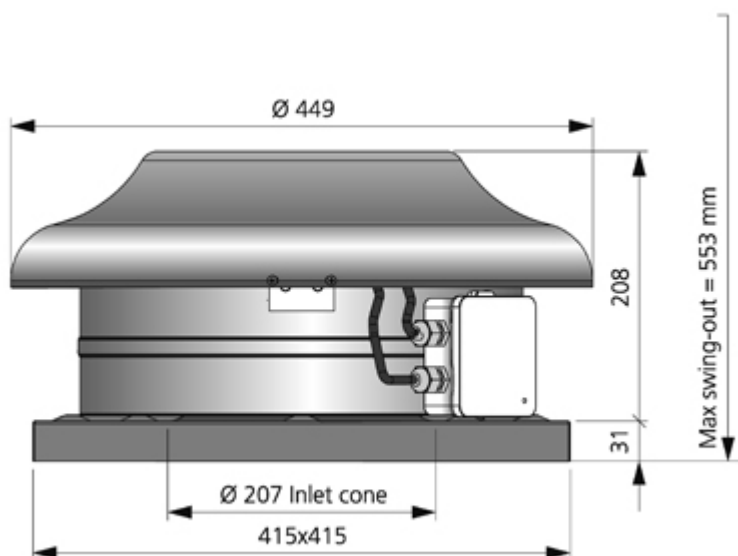
⑨ = Green

⑩ = Violet

⑪ = Quick switch

⑫ = Yellow

DIMENSIONS



ACCESSORIES

Electrical accessories



Transformer controller VRDE 1.5



Speed controller VRS 1.0



Transformer controller VRTE C



Local Demand Controller Kit

Mechanical accessories



Roof curb TFU 400



Connection plate TFU 400



Back draught shutter TFU 400